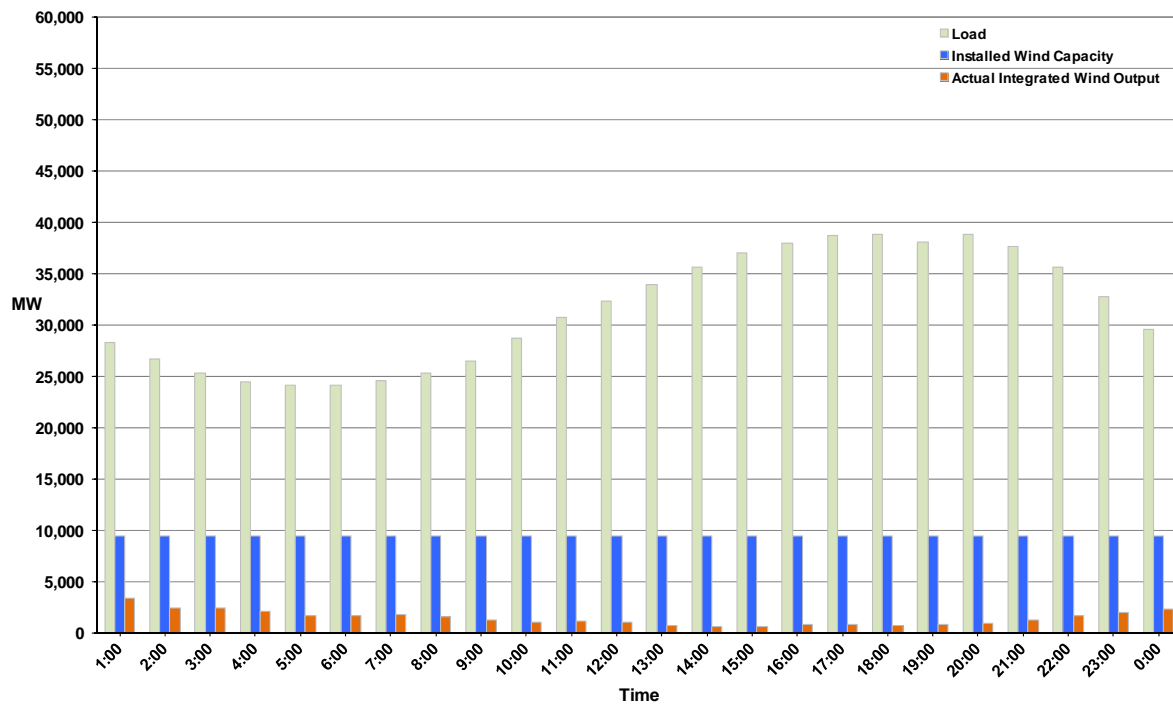




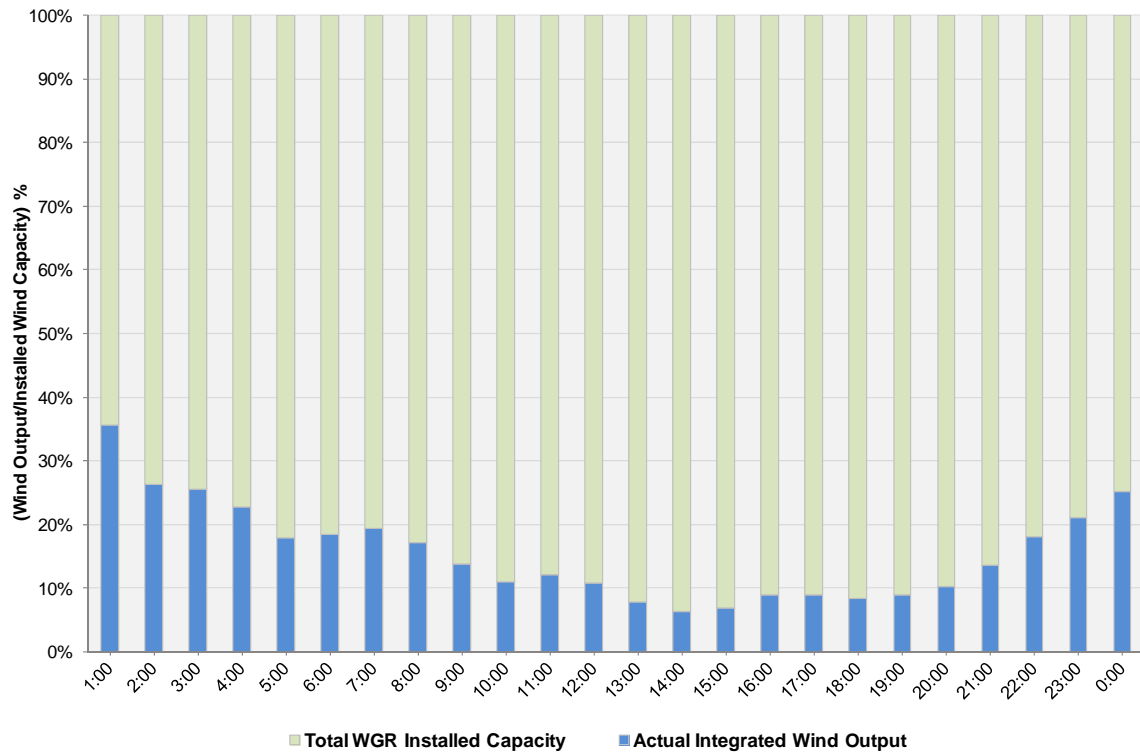
ERCOT Grid Operations Wind Integration Report: 10/23/11

Peak Load	38,804 MW
Load Peak Hour	18
Wind over Peak	786 MW
Wind Record 10/07/11	7,400 MW
Max Wind Value	3,735 MW
Wind Peak Time	00:00
Wind Integration %	12.75%

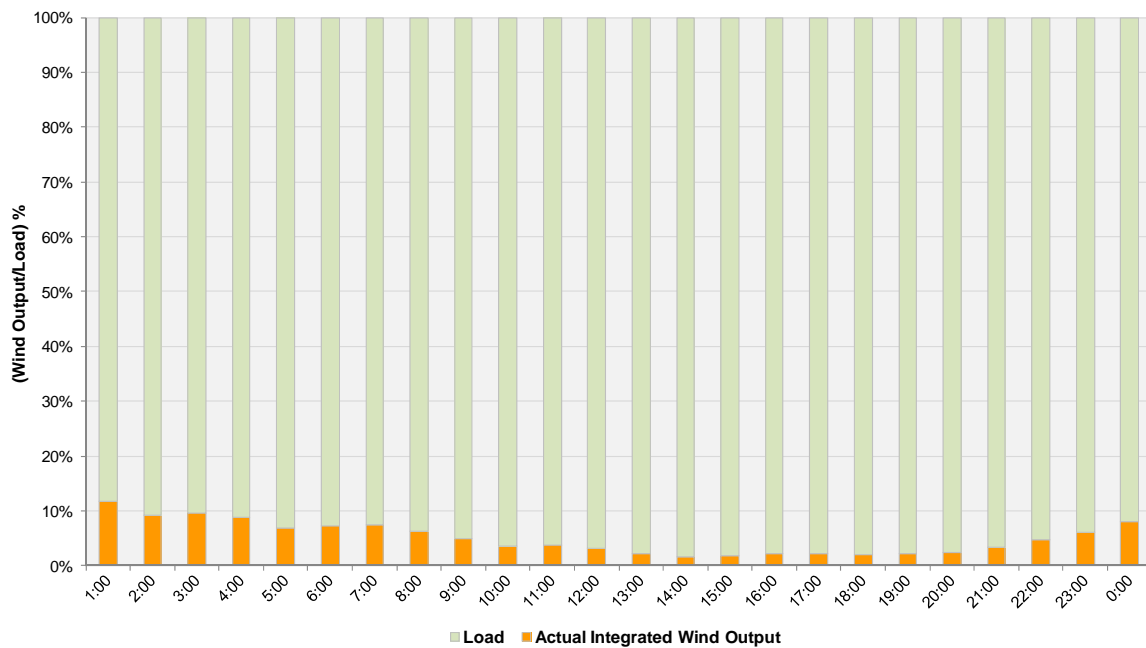
Hourly Average Actual Load vs. Actual Wind Output
10-23-2011



Actual Wind Output as a Percentage of the Total Installed Wind Capacity
10-23-2011



Actual Wind Output as a Percentage of the ERCOT Load
10-23-2011



ERCOT Load vs. Actual Wind Output 10/16/2011 - 10/23/2011

